

AN EMERGING INTEGRATED MODURIZATION PROVIDER

HIMILE HEAVY INDUSTRIES

ONE STOP SOLUTION for Customers from Static Equipment, Skid Package, Modules Fabrication to Floating Unit Integration.

■ Himile Group Overview



1995
Founded

30,000+
Employees

Top 500
China's Top 500 Manufacturing Enterprises

World No.1
Tire Mold
40% World Market



4000+ Sets
CNC Machine
since Yr 1997



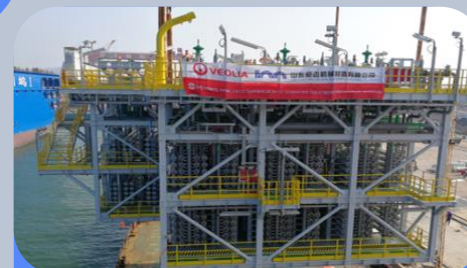
HIMILE HEAVY INDUSTRIES



SubSea Fabrication



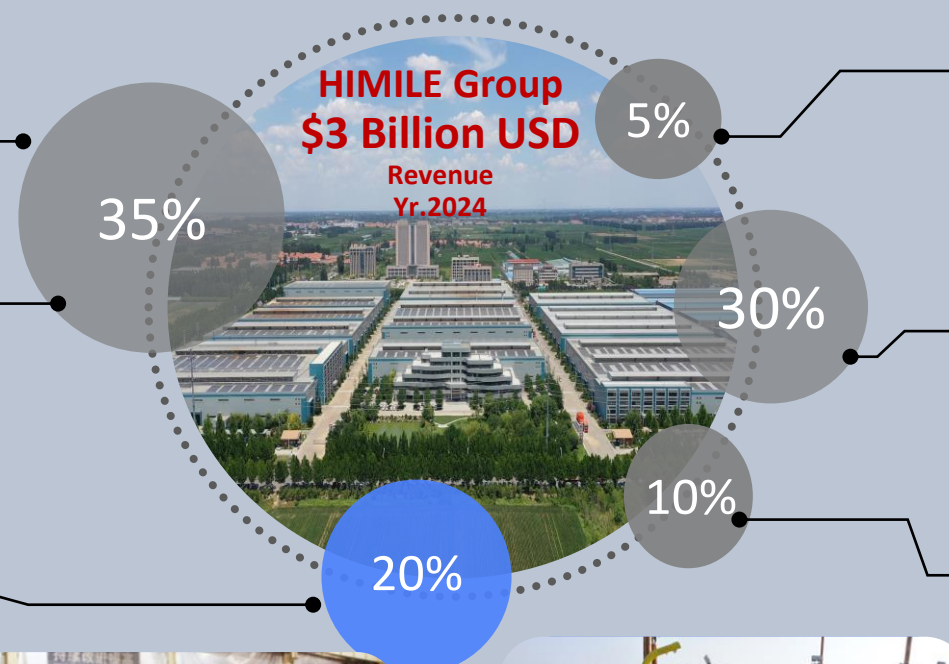
Static Equipment



Process Skid Package



Modules, Integration



HIMILE Group
\$3 Billion USD
Revenue
Yr. 2024

5%



700+ Sets
Reciprocating Compressor
1000+ Sets
Centrifugal Compressor

30%



300K Tons
Machined Casting
Per Annum

10%

Other Business Units

20%

■ Himile Heavy Industries



Product Portfolio

- ✓ Static Equipment
- ✓ Skid Package
- ✓ Modules Fabrication
- ✓ Integration of Floating Units

3 Yards

- Gaomi-Equipment Fab Yard
- Rushan-Module Fab Yard
- Qidong-Module Fab & Integration Yard

3,000+ Employees

700+ Engineers

650 MM USD

Revenue of Yr 2024

15,000 Ton

Per Single Module

40K MT

Annual Equipment Capacity

240K MT

Annual Module Capacity

Rushan

- 40K Ton

Qidong:

- 2026: 40-60K Ton
- Future: 200K Ton

Himile Heavy Industries was established in 2008.

In the past 17+ years, Himile has supplied 25,000+ pressure vessels, 1,500 + skid packages/modules and 560+ Christmas Tree Frames for various industries of FPSO, FLNG, Oil & Gas, Petrochemical, Green Energy etc.

HIMILE REFERENCE

Module



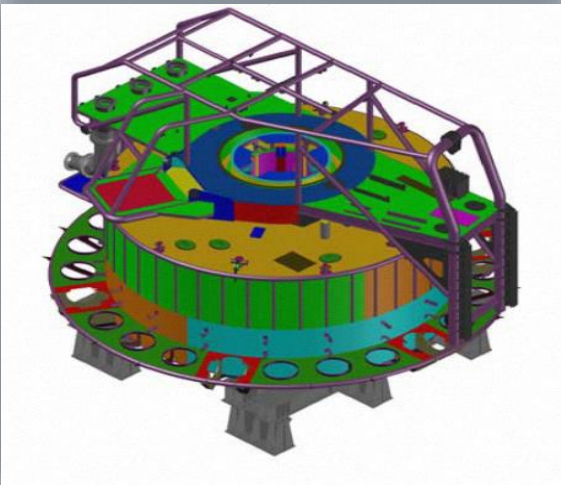
Mooring Fabrication



Subsea Fabrication



Static Equipment



■ Our Footprint and Clients

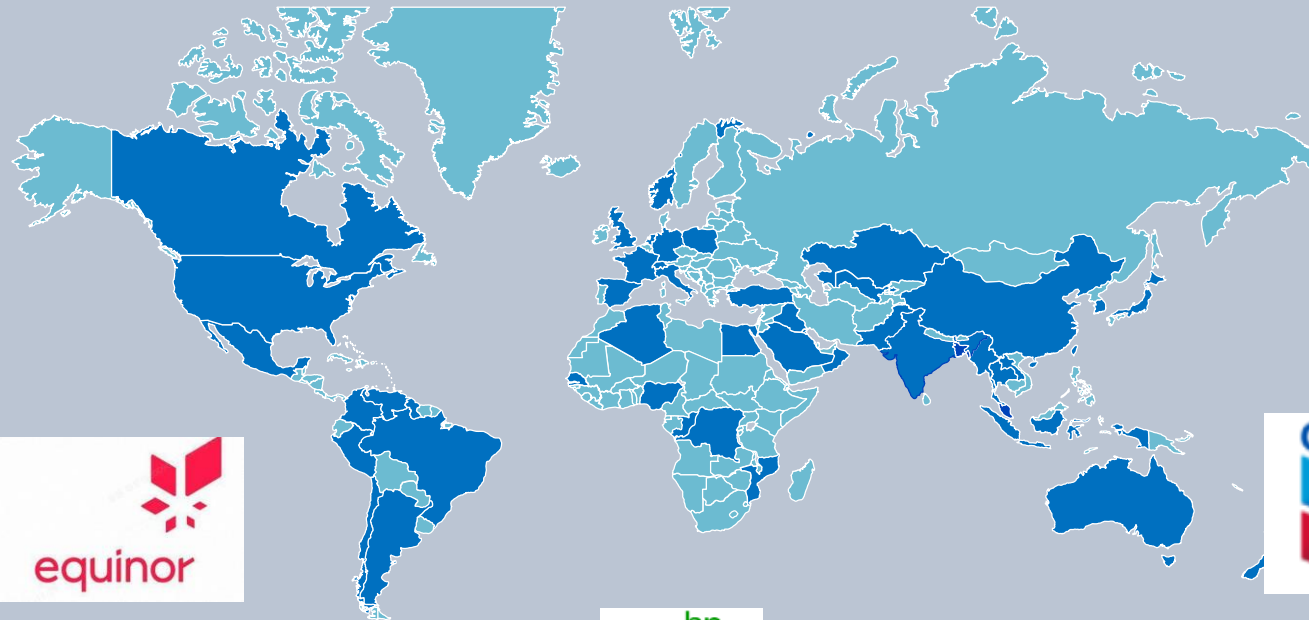
17 Yrs

60 Countries

10+ IOC

20+ NOCs

10+ EPCs



Himile Norwegian Clients



■ FABRICATION YARDS



Gaomi Yard: Static Equipment/Subsea Fabrication



Rushan Yard: Process Package/Heavy Structure/Static Equipment



Qidong Yard: Modules/ Floating Unit Integration



■ HIMILE GAOMI YARD



Total Indoor Area 180,000 m²

Main Fabrication Capability:

- Plate Cutting Thickness : CS 380 mm; SS 70 mm
- Bevel Cutting Length : 12000 mm
- Plate Rolling Thickness : 150 mm
- Crane Capacity : 320T, 18m

- RT Room : L32m X W10m X H10m;
Ion accelerator 6MeV; Max. work piece thickness 280 mm
- PWHT Furnace: 46m X 7m X 7m, 650T, 1050°C
- Pressure Testing Area :
Gas Pressure 110Mpa; Hydraulic Pressure 300Mpa
- Distance to Port : 75 km; Transportation Height Limit : 5.9m

Cleaning Workshop Capability

- Cleanliness Class: Class 9 (Million)/Class 4 (10K)
- Feature: Micro-positive Pressure
- Lifting Height: 12.7m

HIMILE RUSHAN YARD



Yard Products :
Modules, Calm Buoy, Turret, Suction Pile, Manifold,
Heavy Equipment, Heavy Structures...

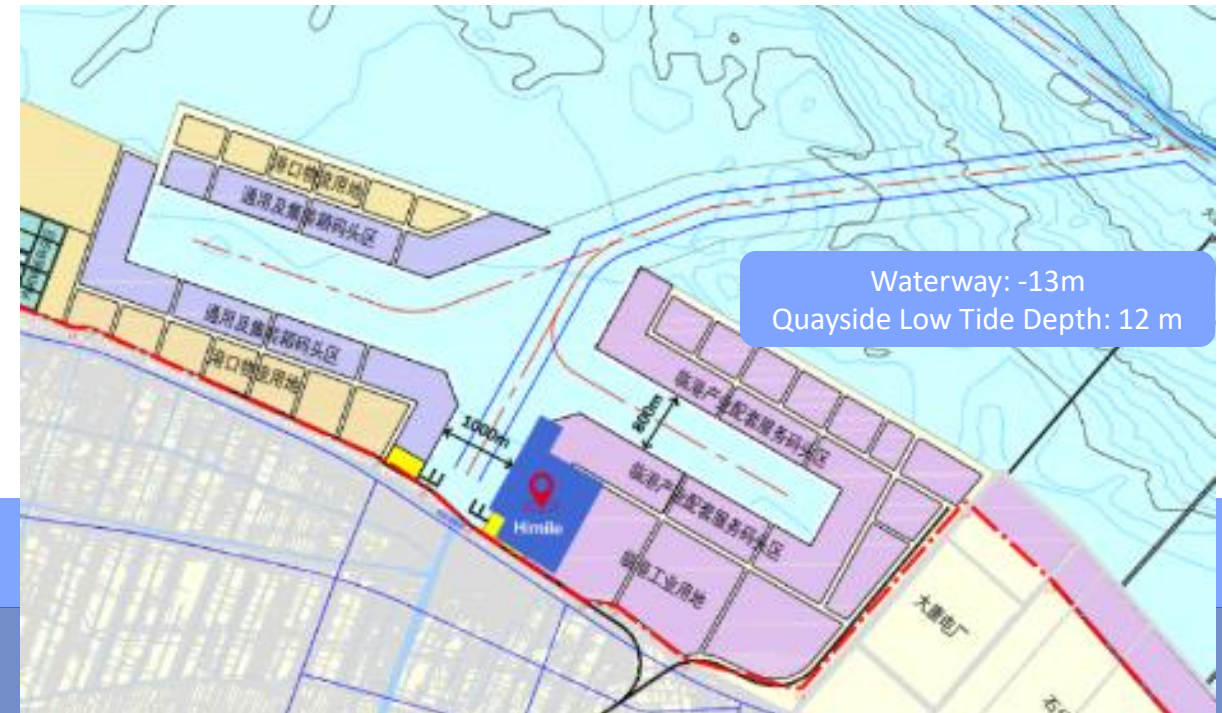


Rushan Yard Capability

- Annual Capacity: 40,000 tons
- Piping: 1,200,000 dia-inch/year
- Coating: 500,000m²/year
- Total area in use: 300,000 m²

- Lifting Capability: 640 ton, 23m height (Indoor)
300 tons, 60m height (outdoor)
- Bearing capacity: 50 ton/m²
- Max. single module: 5,000 tons

■ HIMILE QIDONG YARD



TOTAL AREA: **1.3 M m²**

TOTAL CAPACITY: **200K MT/Y**

QUAYSIDE LENGTH: **1055 M**

WATER DEPTH: **12M (Low Tide)**

LOADOUT: **15,000 T/Single Module**

HIMILE QIDONG YARD



- ① Cutting Workshop**

 - Size: L126 × W72 × H12m
 - Crane: 32T & 20T×3
- ② Deck Assembly Workshop**

 - Size: 205×185×22m
 - Crane: 200T×2 & 20T×8
- ③ Deck Fabrication & Pre-Assembly Area**

 - Size: 98720m²
 - Crane: 75T×10
- ⑤ Pipe Fabrication Workshop**

 - Size: L180 × W264 × H10m
 - Crane: 20T×16 & 16T ×4
- ⑦ Structure Assembly Shop**

 - Size: 24000m²
 - Crane: 32T & 20T×3
- ⑨ Module Assembly Workshop**

 - Size: L277 × W48 × H44 m; L277 × W95 × H17m
 - Crane: 200T ×3 & 20T×6; Under Hook : 35m
- ④ ⑥ ⑧ Blasting & Painting**

 - Blasting: 5 Nos & 6370m²
 - Painting: 14 Nos & 18435m²
 - Capacity: 3 M m²/Y
 - Max size: L50 × W40 × H16m
 - Humidity and Temperature Controlled
- ⑫ Warehouse**

 - Size: L171 × W135 × H18m
 - Crane: 32T ×2 & 20T×4
- ⑩~⑮ Skidway & Quay**

 - Skidway+ Gantry Crane:
 - 400 Tons x 2+50Ton, L 420* SPAN 140 * H75m
 - 600 Tons x 2+50Ton, L 420* SPAN 150 * H90m
 - 900 Tons x 2+50Ton, L 420* SPAN 180* H100m
 - Bearing Capacity: 40T/m²
 - Quay Length: 1055m
 - Water Depth: 12m (Low Tide)

■ Smart Facility

Automated Production Lines, Special-Purpose Equipment, AGVs, and Intelligent Warehousing

Welding Robot



Automatic Piping Fab Line



Intelligent Plate Warehouse



Smart Warehouse



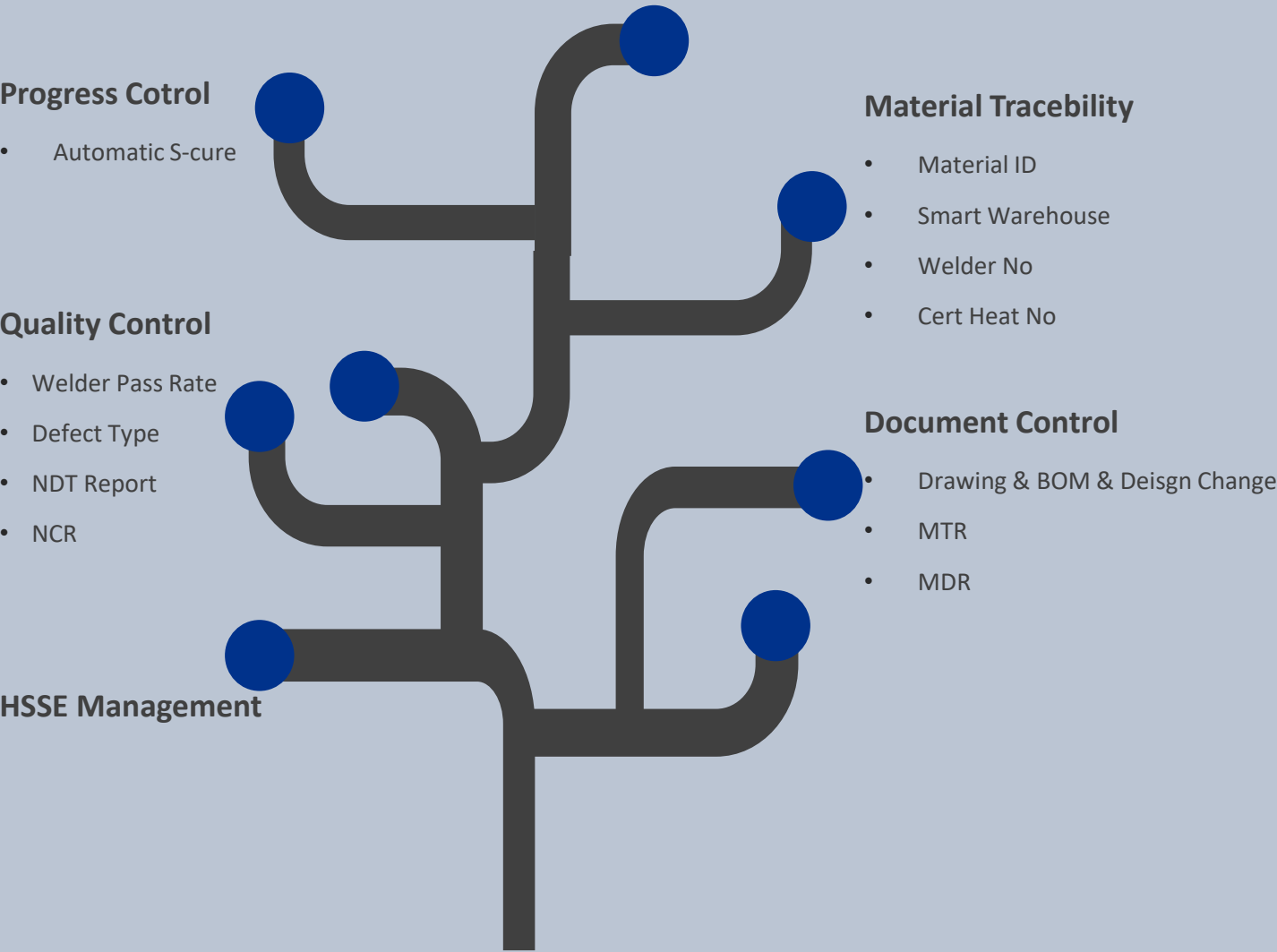
Client Office



Canteen



■ HDMS MODULE SYSTEM



Smart Himile Digital Management System

More safe

Predictable (Mtl, Manpower, Schedule)



Digital delivery

Better quality

Shorter schedule

Cost saving

Remote Control



■ YARD PROGRESS



■ Himile Strength



Himile Business principal :

Market Driven, Client Centric, Strive for Excellence

1. Unique Corporate Culture with Employee-Shareholder Mechanism
2. Solid Financial Foundation Backed by the Group Company
3. Leveraging Group's Rich Knowhow in Precision Manufacturing
4. Experienced International Management Team(20+ expats)
5. Intelligent HDMS Digital System to Optimize Modular Fabrication Efficiency

An aerial photograph of a large industrial port, likely for oil and gas. Several large cargo ships are docked at the pier, with numerous red and blue cranes visible. In the foreground, a large FPSO (Floating Production Storage and Offloading) vessel is being loaded or unloaded with a complex metal structure. The water is a deep blue-green, and the sky is clear. The text is overlaid on the left side of the image.

Our Vision

ONE STOP SOLUTION

**from Static Equipment, Process Skid Package, Modules
to FPSO Integration.**



THANK YOU

HIMILE HEAVY INDUSTRIES

www.himile.com

himile.ppv@himile.com